

RELATED PRODUCTS

Find out more about special products suitable for maritime-related industry sectors on our website www.contrinex.com



Special purpose machines



Green energy



	PART REFERENCE	ART. N°.	HOUSING SIZE	SENSING RANGE	MOUNTING	OUTPUT	CONNECTION
INDUCTIVE	DW-AS-62A-C44	320-820-404	40×40 (C44)	20 mm	Embeddable	PNP NO + NC	Connector M12 4-pin
	DW-AS-63A-C44	320-820-416	40×40 (C44)	40 mm	Non-embeddable	PNP NO + NC	Connector M12 4-pin
	DW-AS-703-M12-671		M12	6 mm	Embeddable	PNP NO	Connector M12 4-pin
	DW-AS-703-M30-773		M30	20 mm	Embeddable	PNP NO	Connector M12 4-pin
RFID	RLS-1302-030*		M30	max. 28 mm	Non-embeddable	RS-485	Connector M12 4-pin
	RTL-0102-001**	620-600-308	∅ 10	max. 17 mm	Embeddable	–	–

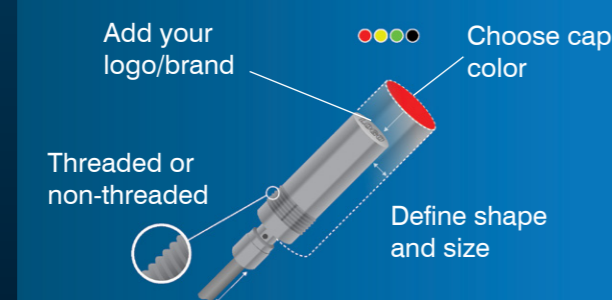
*Read/write module **Tag

PUR CABLE SELECTION

CONNECTING CABLES	PART REFERENCE	ART. N°.	SIZE	PINS	CONFIG.	MATERIAL	LENGTH
	S08-3FUW-020	623-100-103	M8	3	right angle	PUR	2 m
	S08-3FUG-020	623-100-106	M8	3	straight	PUR	2 m
	S12-3FUW-020	623-000-308	M12	3	right angle	PUR	2 m
	S12-3FUG-020	623-000-305	M12	3	straight	PUR	2 m

SENSOR CUSTOMIZATION OPTIONS

- ✓ Housing shape and size
- ✓ Cable length
- ✓ Embeddable / non-embeddable
- ✓ Threaded / non-threaded
- ✓ Selected technical characteristics



WHY CHOOSE US

- ✓ Technology leader for sensors and systems in the most challenging operating conditions
- ✓ Partner of the Maritime industry for over 20 years
- ✓ Building industrial experience since 1972
- ✓ Widest IO-Link portfolio – ready for Industry 4.0 since 2009
- ✓ Most reliable sensors on the market with best temperature compensation and high quality materials
- ✓ Technical mastery of key elements – with our own ASIC development
- ✓ Global sales network with solution-oriented application support
- ✓ Impeccable Swiss quality for our products and systems
- ✓ Responsive, open company culture

WHAT WE OFFER

- ✓ 5 production sites for fast, worldwide availability; 3 sites approved for DNV certified products
- ✓ 3 logistic hubs for rapid delivery – even for special products
- ✓ International Customer Services
- ✓ Long-standing experience in product customization and brand labeling
- ✓ Vigorous lab testing, pre-shipment inspections and compliance with international and market standards

KEY DATES

- 1999** Inductive sensors with world's most robust full-metal housing, thanks to patented Condet® technology
- 2005** Hermetically sealed inductive sensors with full-metal housing in 100% saltwater-proof stainless steel (V4A/316L)
- 2008** Contrinex ASIC with IO-Link interface

Terms of delivery and right to change design reserved.

HEADQUARTERS

CONTRINEX AG Industrial Electronics
Route du Pâqui 3 – PO Box – CH-1720 Corminboeuf – Switzerland
Tel: +41 26 460 46 46 – Fax: +41 26 460 46 40
Internet: www.contrinex.com – E-mail: info@contrinex.com



www.contrinex.com

PLUS+AUTOMATION
HELPING YOU #MAKESENSEOFSENSORS

0121 58 222 58
Sales@PLUSAutomation.co.uk
www.PLUSAutomation.co.uk



© CONTRINEX AG 2022
999-410-002 – 07.22

CONTRINEX
SENSORS SAFETY RFID



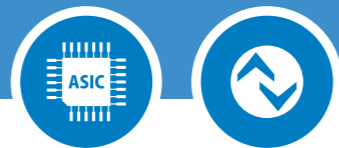
INDUCTIVE SENSORS

MARITIME

FOR SHIPS, PORTS
AND OFFSHORE

- ✓ EXTREMELY RUGGED SENSORS, FIT FOR INDUSTRY 4.0
- ✓ RESISTANT TO CORROSION AND SALT WATER
- ✓ IMPERVIOUS, ENCLOSURE RATING IP68 OR IP69K
- ✓ GL APPROVED, CLASS DNV-GL-CG-0339
- ✓ PRESSURE-RESISTANCE AVAILABLE UP TO 500 BAR (7,251 PSI), PEAK 800 BAR (11,603 PSI)
- ✓ IO-Link INTERFACE ALLOWS IoT CONNECTIVITY FOR REMOTE CALIBRATION AND PREDICTIVE MAINTENANCE
- ✓ SENSOR CUSTOMIZATION OPTIONS

INDUCTIVE SENSORS



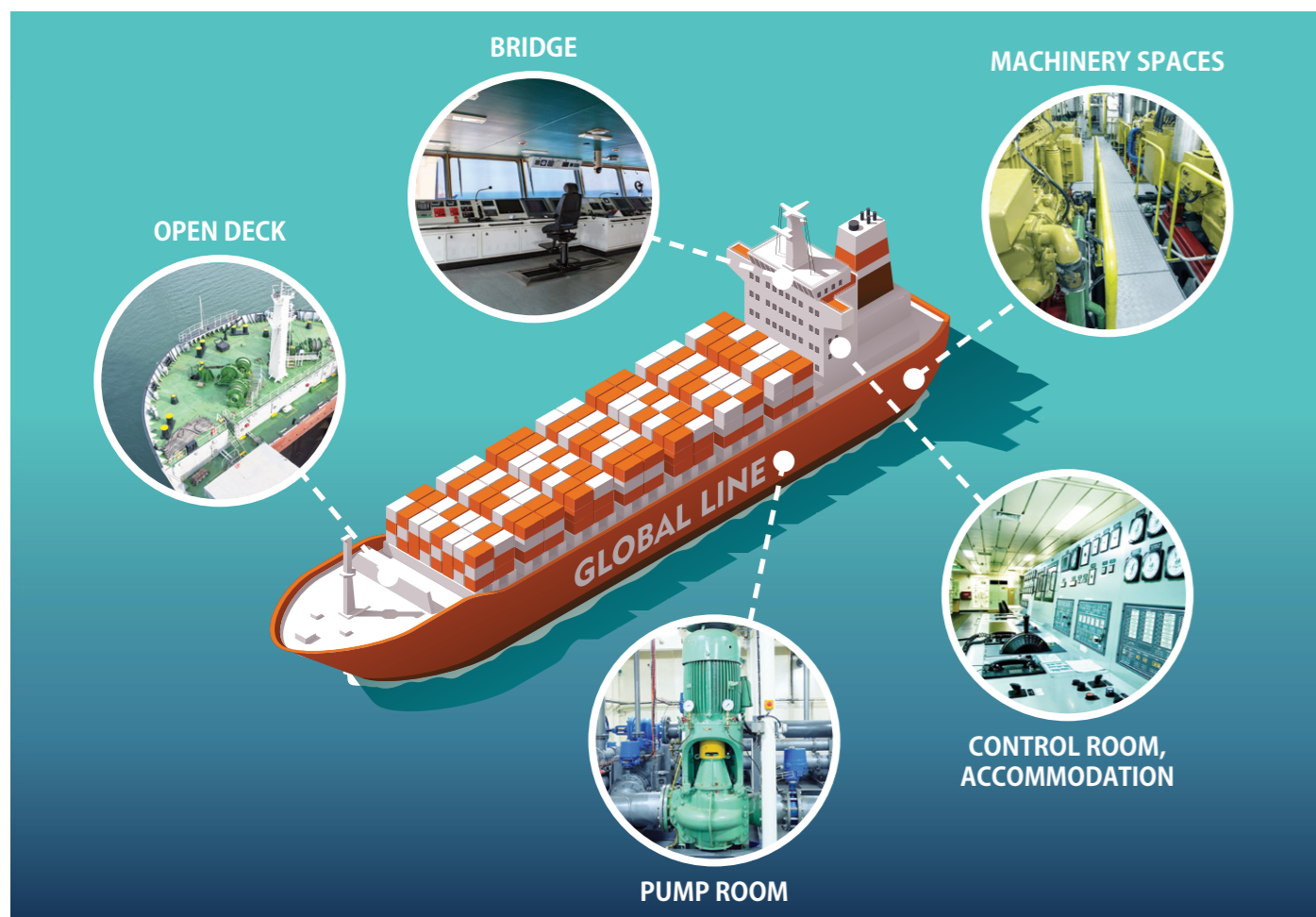
ABOUT DNV CERTIFICATION

DNV was created in 2013 with the merger of Det Norske Veritas (Norway) and Germanischer Lloyd (Germany). It is an internationally accredited certification body that establishes and maintains technical standards for the construction and operation of ships and other offshore mobile structures in international waters. DNV is authorized by 130 maritime administrations to perform certification or verification on their behalf.

The classification standards of DNV comprise safety, reliability and environmental requirements. Contrinex Maritime inductive sensors meet these requirements regarding temperature, humidity, vibration, enclosure rating and electromagnetic compatibility. They have therefore been approved for use in the locations indicated below.



DNV-APPROVED LOCATION CLASSES



PARAMETER	MACHINERY SPACES	CONTROL ROOM, ACCOMMODATION	BRIDGE	PUMP ROOM, HOLDS, UNHEATED	OPEN DECK
TEMPERATURE	✓	✓	✓	✓	✓
HUMIDITY	✓	✓	✓	✓	✓
VIBRATION	✓	✓	✓	✓	✓
EMC	✓	✓	M10E only	✓	M10E only
ENCLOSURE	✓	✓	✓	✓	✓

MARITIME

INDUCTIVE POSITION SENSORS

M12 / M18 / M30

- ✓ Factor 1 on steel and aluminum
- ✓ Totally impervious IP68/IP69K, seawater resistant
- ✓ Stainless steel V4A (1.4404/AISI 316L)
- ✓ Special EMC protection
- ✓ Temperature range -25... +85°C (-13... +185°F)

LONGEST OPERATING DISTANCES

P12G

- ✓ Factor 1 on steel and aluminum
- ✓ Totally impervious IP68/IP69K, extremely robust
- ✓ Stainless steel V4A (1.4404/AISI 316L)
- ✓ Operating up to 500 bar (7,255 psi), peak 800 bar (11,603 psi)
- ✓ Temperature range -25... +85°C (-13... +185°F)

PEAK UP TO 800 BAR (11,603 PSI)

C23

- ✓ Factor 1 on steel and aluminum
- ✓ Small, flat housing: 20x32x8 mm
- ✓ Totally impervious IP68/IP69K, seawater resistant
- ✓ Stainless steel V4A (1.4404/AISI 316L)
- ✓ Temperature range -25... +85°C (-13... +185°F)

FLAT CUBIC SHAPE

M10E

- ✓ Ceramic front face
- ✓ Seawater resistant, IP68
- ✓ Stainless steel V2A
- ✓ IO-Link interface
- ✓ Temperature range -25... +70°C (-13... +158°F)

OPERATING PRESSURE UP TO 200 BAR (2,900 PSI)

DNV	PART REFERENCE	ART. N°	HOUSING SIZE	SENSING RANGE	MOUNTING	OUTPUT	CONNECTION
M12 / M18 / M30	DW-MS-703-M12	330-320-110	M12	6 mm	Embeddable	PNP NO	Connector M12 4-pin
	DW-MD-703-M12	330-320-111	M12	6 mm	Embeddable	PNP NO	PUR cable
	DW-MS-703-M18-002	330-320-112	M18	10 mm	Embeddable	PNP NO	Connector M12 4-pin
	DW-MD-703-M18	330-320-113	M18	10 mm	Embeddable	PNP NO	PUR cable
	DW-MS-703-M30-002	330-320-114	M30	20 mm	Embeddable	PNP NO	Connector M12 4-pin
	DW-MD-703-M30	330-320-115	M30	20 mm	Embeddable	PNP NO	PUR cable
P12G	DW-MS-703-P12G	330-320-108	M12 (P12)	1.5 mm	Embeddable	PNP NO	Connector M12 4-pin
	DW-MD-703-P12G	330-320-109	M12 (P12)	1.5 mm	Embeddable	PNP NO	PUR cable
C23	DW-MD-703-C23	330-320-116	C23	7 mm	Embeddable	PNP NO	PVC cable
	DW-MV-703-C23-276	330-320-117	C23	7 mm	Embeddable	PNP NO	PVC cable + M8 3-pin
M10E	DW-AD-603-M10E-620	320-620-049	M10	0.6 mm	Embeddable	PNP NO	PUR cable
	DW-AD-603-M10E-637	320-620-050	M10	0.6 mm	Embeddable	PNP NO	PUR cable

DNV MARITIME APPROVED

LONG SERVICE LIFE AND IoT CONNECTIVITY

The Maritime range of inductive sensors, certified by DNV, offers unrivalled performance features. Service life is the longest of any inductive sensor on the market, even in harsh environments, while EMC protection meets maritime requirements, particularly with regard to power supply variations and low frequency immunity.

Housings are impervious and rated IP68/IP69K. Sizes M12 to M30 and C23 offer outstanding resistance to salt water and corrosion, thanks to one-piece, stainless-steel construction in grade V4A/AISI 316L.

The maximum operating pressure is 80 bar (1,160 psi) or, for P12G high-pressure types, 500 bar (7,251 psi), peak 800 bar (11,603 psi). In the PNP version, sensors include an IO-Link interface for point-to-point communication.



100% SALTWATER-PROOF

IO-LINK

CLOUD ANALYTICS

MAINTENANCE PLANNING

IO-Link SENSORS

IO-Link SMART COMMUNICATION WITH CONTRINEX SENSORS

- Continuous monitoring of process data
- Continuous diagnosis of sensor status
- Advanced parameter settings
- Easy check of sensor ID, to ensure the right sensor is at the right place

DATA MONITORING

DIAGNOSIS

NO/NC SELECTION

TEMPERATURE

DETECTION COUNTER

DELAY

STRETCH